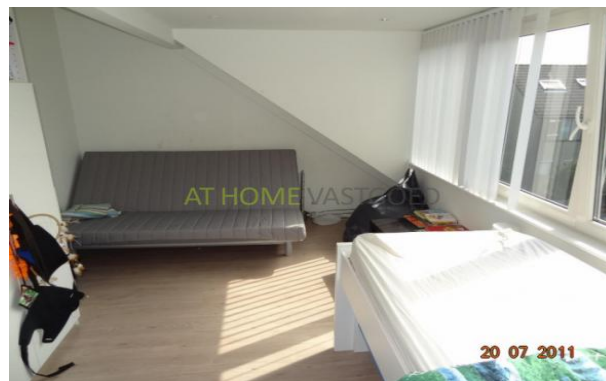


Family house, Red Debroystraat in Rotterdam(Zevenkamp)

Type	Family house
Interior	Unfurnished
Available On	Immediately (Start contract)
Available Until	Unknown
Min Rental Period	Determined by landlord
Max Rental Period	Determined by landlord
Surface	130 m2
Bedrooms	3
Bathrooms	1
Toilets	2
Rental price	€ 1200 a month excl. gas/water/electricity
Deposit	€ 1200
properties.floor	Tile



[View on the website](#)

Very neat and spacious four bedroom family house with spacious low maintenance garden with shed situated in a quiet street in Heptathlon. The whole house was recently renovated and looks neat. The property will be rented unfurnished. Ground floor: entrance hall, toilet, storage room, spacious living room with a beautiful tiled floor with underfloor heating and a complete home cinema system with LCD TV and TV cabinet. The modern kitchen is equipped with various appliances: fridge, ceramic hob, extractor, microwave, oven, dishwasher and ample storage. Through a sliding door which also provides plenty of light is visible from the living room access to the spacious and sunny garden with wooden shed which is located on the southeast.

1st floor: Landing, bedroom 1 (previously two rooms) with access to a sunny balcony, two bedroom, fully tiled bathroom with shower, sink, sink and toilet. This floor has a laminate floor. 2nd floor: Overflow, washing machine and dryer, storage room, bedroom three is seeing laminate flooring, plastered walls and a dormer. Dimensions: BG Lounge: 6.0 x 5.1 m Kitchen: 3.6 x 2 m garden: 11.5 x 5.4 m 1st floor: Bedroom 1 5.1 x 3.6 m Bedroom 2:: 3.3 x 3.0 m Bathroom 2.1 x 2.0 m

2nd floor: bedroom 3: 1.5 x 3.3 m The house is situated in a quiet street in Heptathlon, near Nesselande, in close proximity to shops, schools, public transport, Zevenhuizerplas, the Wollefoopenpark and highways (A20, A12, A13 and A16). A playground is within walking distance. Heating by means of district heating, partial underfloor heating, hot water through central facility / district heating. Fully equipped with hardwood frames with double glazing.