

Maisonnette, Vuurvlinderhof in Schiedam

Type	Maisonnette
Interior	Furnished
Available On	Immediately (Start contract)
Available Until	Unknown
Min Rental Period	Determined by landlord
Max Rental Period	Determined by landlord
Surface	90 m ²
Bedrooms	2
Bathrooms	1
Toilets	1
Rental price	€ 1000 a month excl. gas/water/electricity
Deposit	€ 1000
properties.floor	Laminate



[View on the website](#)

available as of July 2012:

Spacious well maintained 3 bedroom hoekmaisonette in a quiet residential complex with built around shared courtyard.

Ground floor

Closed entrance with doorbells and mailboxes.

Entrance with access to staircase and elevator.

First floor

Entrance, spacious 1st hall and access to storage room (with washing machine connection, stucco walls, carpet tiles, window, radiator and own entrance).

Fully renovated bathroom (2009) with toilet and tiled in natural stone.

In the hall is the meter and a large spacious closet with sliding doors.

A connecting door gives access to the 2nd hall. These advances are the bathroom, two bedrooms and there is an open staircase to the 2nd floor.

A fully renovated bathroom (2009) has a computerized Jacuzzi, sink and separate shower with rain shower and a normal shower head. The walls and floor in the bathroom are tiled the same as the toilet.

The two spacious bedrooms (13.6 m² and 12.2 m²) are beautifully finished. The entire ground floor (except for the bathroom and the toilet) is a splendid V-groove laminate flooring in 2009. The floor is of a very high quality, provided with running noise-reduction layer.

Second floor

Through the open staircase leads to the spacious, bright living room with air conditioning, an open kitchen. The living room has lots of windows.

The living room has a spacious balcony which features 2009 new patio tiles. On the side of the sliding door is a large curve, where you can place a seat. Further along the width of the house is the balcony too completely.

On the same floor is the kitchen (14 m²). It is an L-shaped SieMatic kitchen with dishwasher. The kitchen is also a closet where the central heating boiler is located. This cabinet is equipped with ample shelves to stock.

On this whole floor is the same V-groove laminate flooring as downstairs. All walls are equipped with textured paint.

Dimensions (approx)

Maisonnette, Vuurvlinderhof in Schiedam

- Hall 1: 4,7 m²
- Storage: 6,8 m²
- Hall 2: 6,0 m²
- Bathroom: 4,5 m²
- Bedroom 1: 13.6 m²
- Bedroom 2: 12.2 m²
- Living room &
- Kitchen: 44 m²

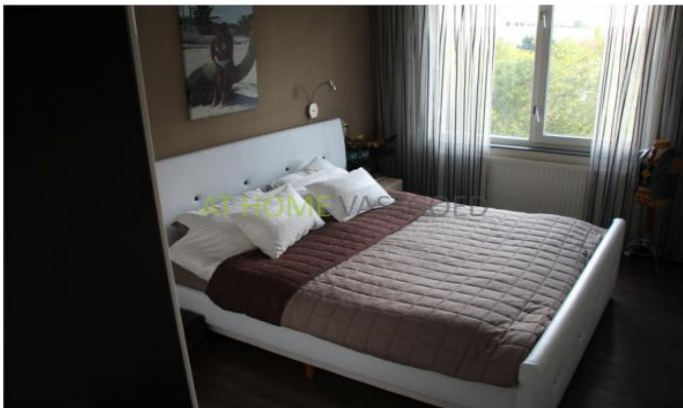
Around the corner there are local shops, as well as public transport, tram and bus towards the center of Schiedam and Rotterdam. Highway traffic network A20, A15, A20 and A13 can be reached via roads within 5 minutes. For runners, cyclists and skaters can be reached within 2 minutes nature Middle Delfland.

- airco In the living room.
- Computergestuurde Jacuzzi.
- Separate Shower.
- Hangend Toilet.

Rent is excluding GWL

AT HOME VASTGOED

Foto's voor Schiedam, Vuurvliederhof



AT HOME VASTGOED

Foto's voor Schiedam, Vuurvlinderhof

