

Family house, De Hoef in Hooge Zwaluwe(centrum)

Type	Family house
Interior	Furnished
Available On	Immediately (Start contract)
Available Until	Unknown
Min Rental Period	Determined by landlord
Max Rental Period	Determined by landlord
Surface	150 m2
Bedrooms	4
Bathrooms	2
Toilets	3
Rental price	€ 1950 a month excl. gas/water/electricity
Deposit	€ 1950
properties.floor	Not known



[View on the website](#)

FOR RENT

In sought-after location, on a quiet courtyard, in the pretty village of Hooge Zwaluwe, 10 minutes away from the towns of Breda and Dordrecht, we offer to rent an excellently finished, furnished, detached house with garage. From the house overlooks a playground for children.

Description

Ground floor: entrance hall with galleried landing with tiled floor with underfloor heating, stairs to the floor, meter (7 groups-aardlekbeveiligd), fully tiled hanging closet with sink and floor, study / guest room (3.40X4.70m) equipped with mozaekparket access to the tiled bathroom (March 2009) with shower, hanging closet, sink, radiator and free space for washing equipment. The U-shaped living room (approx 55m2) with tiled floor with underfloor heating, fireplace and adjoining conservatory with safety glass, semi-open kitchen with cooking island with all appliances. Utility room with tiled floor with underfloor heating which the boiler (December 2008) is placed and washing machine. The utility is also access to the crawl space where the heating expansion tank is located. Attached garage with electricity, overhead door and door to the garden.

First floor

landing, bedroom (3.50X5.30m) with storage space behind the knee walls, fully tiled bathroom (April 2008) with dormer windows and shutters, equipped with a sink, shower, toilet and extra large bath. Bedroom (2.70X5.20m) with dormer window with shutters and storage. Bedroom (2.50X5.50m) with storage space behind the knee walls and door to loggia.

Second floor

via a loft ladder, the walkable attic is accessible, when mechanical ventilation is provided.

Garden

The garden was built (2005) with terraces, garden shed with electricity and lighting, gazebo with electricity and lighting, a playground for children and enlightenment. Also, there are various fruit trees / plants.

AT HOME VASTGOED

Foto's voor Hooge Zwaluwe, De Hoef



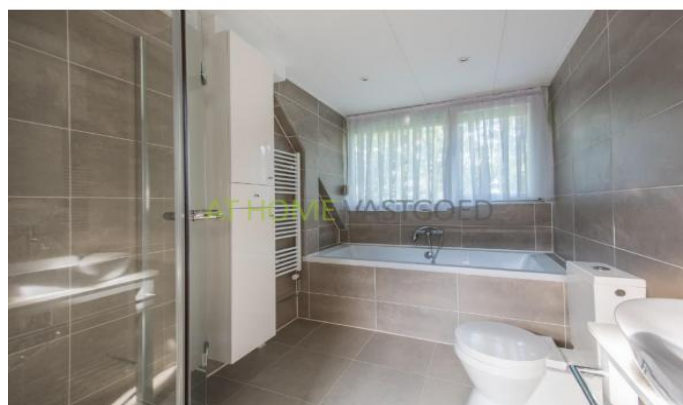
AT HOME VASTGOED

Foto's voor Hooge Zwaluwe, De Hoef



AT HOME VASTGOED

Foto's voor Hooge Zwaluwe, De Hoef



AT HOME VASTGOED

Foto's voor Hooge Zwaluwe, De Hoef

